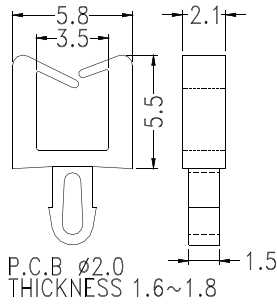
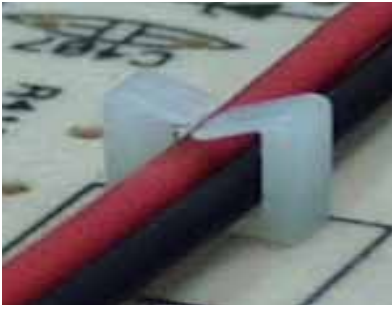
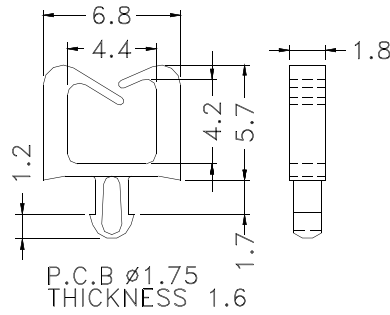
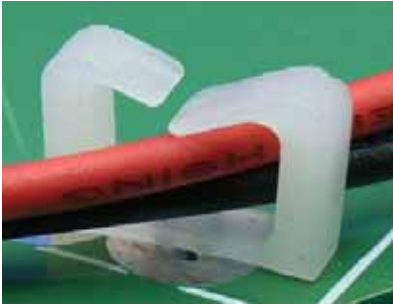


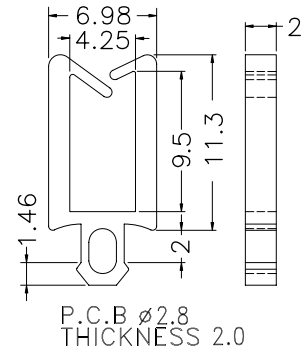
- ◆ MATERIAL: NYLON 66(UL)
- ◆ FLAME CLASS : 94V-2
- ◆ COLOR: NATURAL
- ◆ UNIT: mm



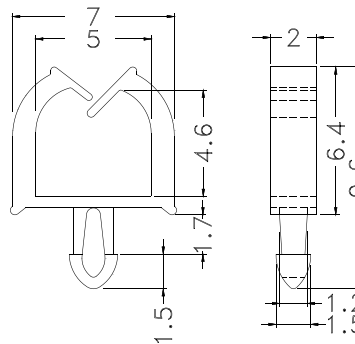
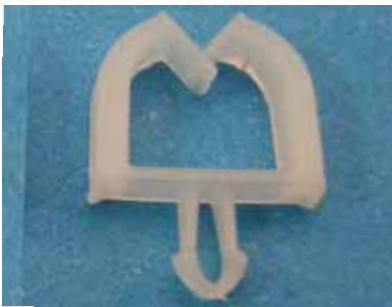
PART NO	PACKAGE
MWS-8	2000



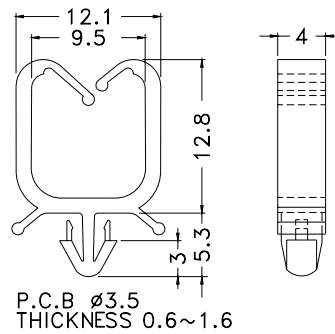
PART NO	PACKAGE
MWS-16	2000



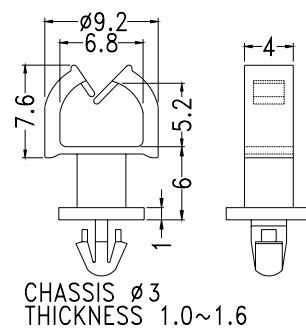
PART NO	PACKAGE
MWS-24	2000



PART NO	PACKAGE
MWS-17	2000

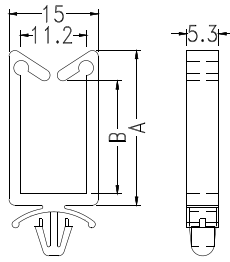
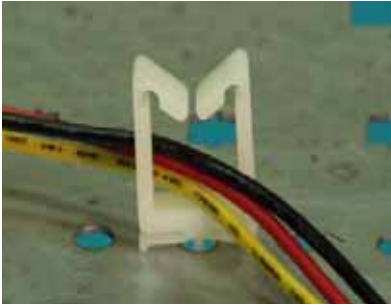


PART NO	PACKAGE
MWC-10	2000



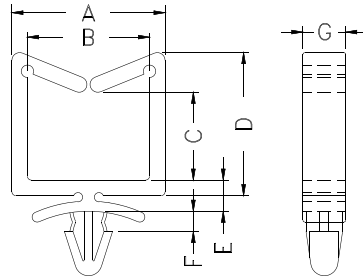
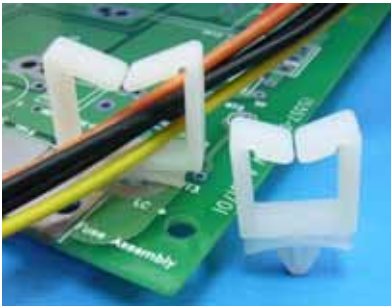
PART NO	PACKAGE
MWSL-6	1000

- ◆ MATERIAL: NYLON 66(UL)
- ◆ FLAME CLASS :94V-2
- ◆ COLOR:NATURAL
- ◆ UNIT:mm



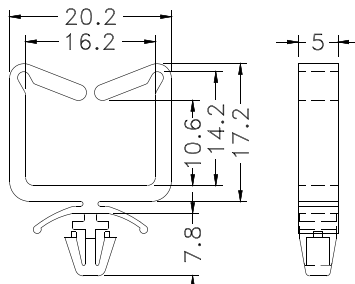
CHASSIS $\phi 4.8 \sim 5.0$
THICKNESS 0.8~2.0

PART NO	A	B	PACKAGE
CHA-1	12.0	5.0	1000
CHA-2	17.0	10.0	500
CHA-3	26.0	19.0	
CHA-4	34.0	27.0	



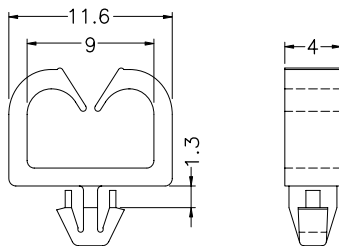
CHASSIS $\phi 4.8 \sim \phi 5.0$
THICKNESS 1.2~2.1

PART NO	A	B	C	D	E	F	G	PACKAGE
CHP-1	19.7	15.7	11.3	18.2	4.1	2.3	5.4	500
CHP-2	15.0	11.0	10.9	17.0	3.9		5.5	



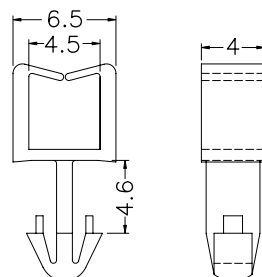
CHASSIS $\phi 4.8$
THICKNESS 1.0~2.5

PART NO	PACKAGE
CHR-11	500



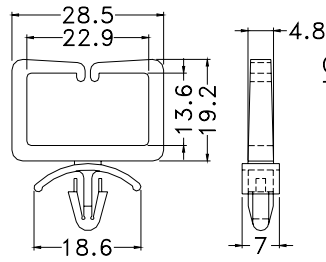
CHASSIS $\phi 3.5$
THICKNESS 0.8~1.2

PART NO	PACKAGE
MWS-19	1000



CHASSIS $\phi 3.5$
THICKNESS 4

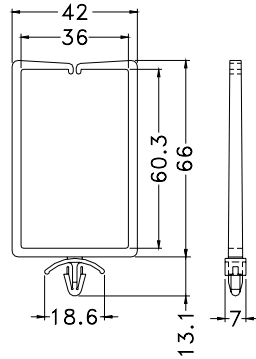
PART NO	PACKAGE
MWS-20	1000



CHASSIS $\phi 4.8 \sim \phi 5.0$
THICKNESS 0.8~4.0

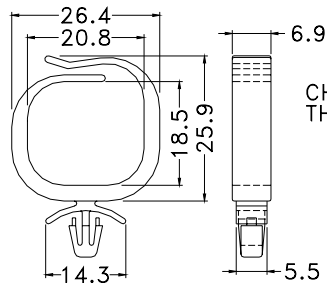
- ◆ MATERIAL: NYLON 66(UL)
- ◆ FLAME CLASS :94V-2
- ◆ COLOR:NATURAL
- ◆ UNIT:mm

PART NO	PACKAGE
CHE-1	500



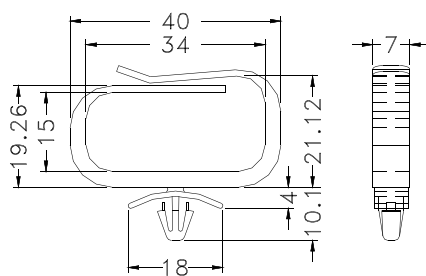
CHASSIS $\phi 4.8 \sim \phi 5.0$
THICKNESS 0.8~4.0

PART NO	PACKAGE
CHE-2	100



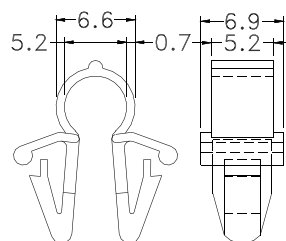
CHASSIS $\phi 4.8 \sim \phi 5.0$
THICKNESS 0.8~2.0

PART NO	PACKAGE
CHD-18	250



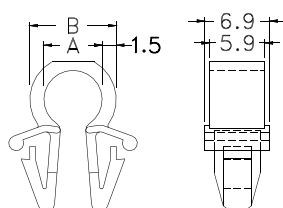
CHASSIS $\phi 4.8$
THICKNESS 0.8~2.0

PART NO	PACKAGE
CHD15-34	250



CHASSIS $\phi 6.0$
THICKNESS 2.0

PART NO	PACKAGE
OCC-5	1000



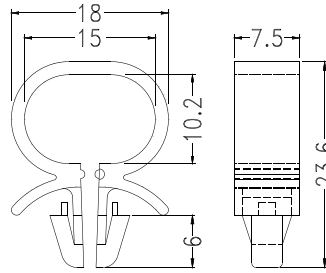
CHASSIS $\phi 6.0$
THICKNESS 2.0

PART NO	A	B	PACKAGE
OCC-6	6.2	9.2	500
OCC-8	8.2	11.2	
OCC-10	10.2	13.2	

WIRE Holder / Mount

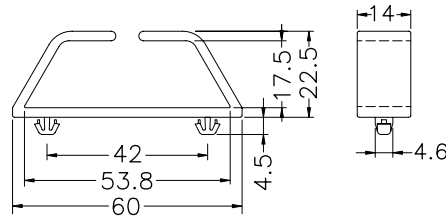
Hankook Fastener

- ◆ MATERIAL: NYLON 66(UL)
- ◆ FLAME CLASS :94V-2
- ◆ COLOR: NATURAL
- ◆ UNIT: mm



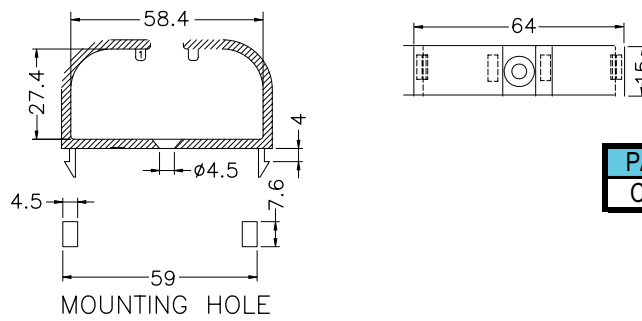
CHASSIS $\phi 6.0 \sim \phi 6.5$
THICKNESS 0.8~2.5

PART NO	PACKAGE
OCCB-15	500

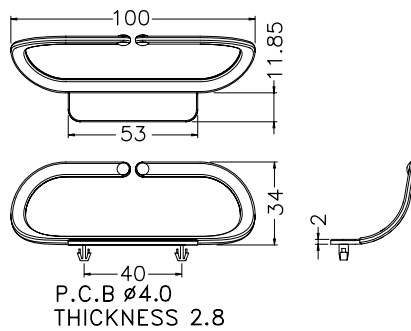


CHASSIS $\phi 4.8$
THICKNESS 1.5

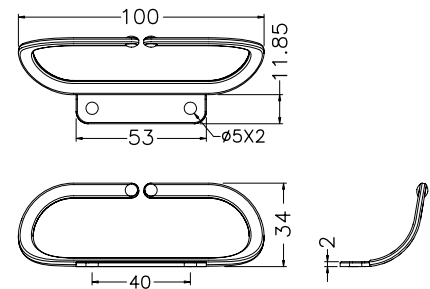
PART NO	PACKAGE
CHT-42	100



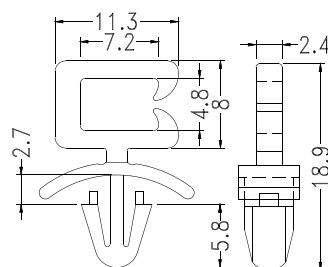
PART NO	PACKAGE
CHV-59	100



PART NO	PACKAGE
WUCD-100	100



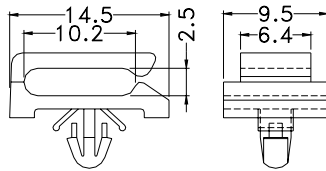
PART NO	PACKAGE
WUCDF-100	100



CHASSIS $\phi 4.8$
THICKNESS 0.8~2.0

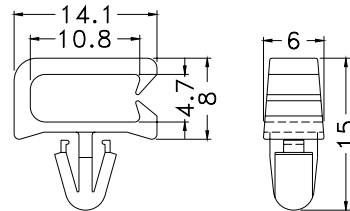
PART NO	PACKAGE
WAS-1	1000

- ◆ MATERIAL: NYLON 66(UL)
- ◆ FLAME CLASS :94V-2
- ◆ COLOR: NATURAL
- ◆ UNIT: mm



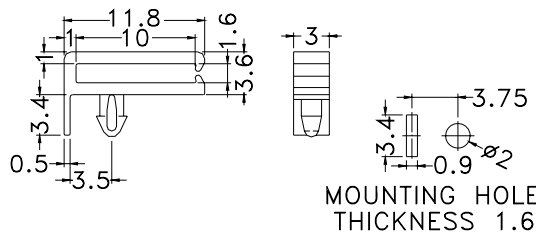
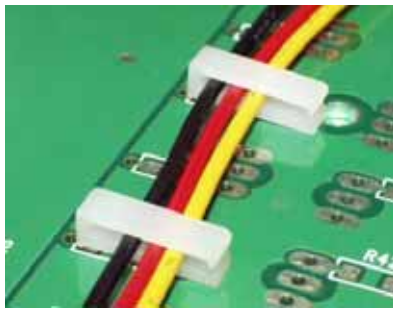
CHASSIS $\phi 3$
THICKNESS 0.6~1.8

PART NO	PACKAGE
MIS-2	2000

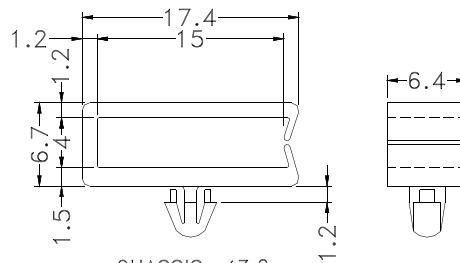


CHASSIS $\phi 4.8$
THICKNESS 0.8~1.6

PART NO	PACKAGE
MIS-3	2000

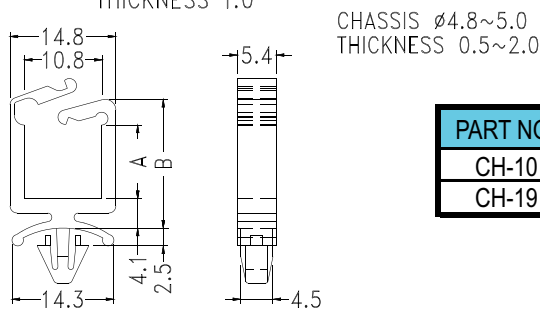
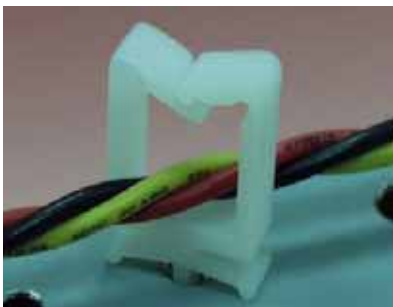


PART NO	PACKAGE
MIS-4	1000

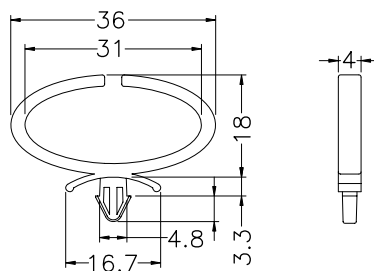


CHASSIS $\phi 3.0$
THICKNESS 1.0

PART NO	PACKAGE
MIS-5	2000



PART NO	A	B	PACKAGE
CH-10	10.3	18.0	500
CH-19	19.6	27.2	



PART NO	PACKAGE
WUCD-36	100